

Agronomy Research

Established in 2003 by the Faculty of Agronomy, Estonian Agricultural University

Aims and Scope:

Agronomy Research is a peer-reviewed international Journal intended for publication of broad-spectrum original articles, reviews and short communications on actual problems of modern biosystems engineering incl. crop and animal science, genetics, economics, farm- and production engineering, environmental aspects, agro-ecology, renewable energy and bioenergy etc. in the temperate regions of the world.

Copyright:

Copyright 2009 by Estonian University of Life Sciences, Estonian Research Institute of Agriculture, Latvia University of Agriculture, Aleksandras Stulginskis University, Lithuanian Institute of Agriculture and Lithuanian Institute of Horticulture. No part of this publication may be reproduced or transmitted in any form, or by any means, electronic or mechanical, incl. photocopying, electronic recording, or otherwise without the prior written permission from the Estonian University of Life Sciences, Estonian Research Institute of Agriculture, Latvia University of Agriculture, Aleksandras Stulginskis University, Lithuanian Institute of Agriculture and Lithuanian Institute of Horticulture.

***Agronomy Research* online:**

Agronomy Research is available online at: <http://agronomy.emu.ee/>

Acknowledgement to Referees:

The Editors of *Agronomy Research* would like to thank the many scientists who gave so generously of their time and expertise to referee papers submitted to the Journal.

Abstracted and indexed:

SCOPUS, CABI Full Paper and Thompson Scientific database: (Zoological Records, Biological Abstracts and Biosis Previews, AGRIS, ISPI, CAB Abstracts, AGRICOLA (NAL; USA), VINITI, INIST-PASCAL.)

Subscription information:

Estonian Grassland Society
St. Teaduse 4, 75501 Saku, ESTONIA
E-mail: heli.meripold@eria.ee

Journal Policies:

Estonian University of Life Sciences, Estonian Research Institute of Agriculture, Latvia University of Agriculture, Aleksandras Stulginskis University, Lithuanian Institute of Agriculture and Lithuanian Institute of Horticulture and Editors of *Agronomy Research* assume no responsibility for views, statements and opinions expressed by contributors. Any reference to a pesticide, fertiliser, cultivar or other commercial or proprietary product does not constitute a recommendation or an endorsement of its use by the author(s), their institution or any person connected with preparation, publication or distribution of this Journal.

ISSN 1406-894X

CONTENTS

VII FOOD SCIENCE AND TECHNOLOGY	693
M. Ahokas, A.-L. Välimaa, T. Lötjönen, A. Kankaala, S. Taskila and E. Virtanen Resource assessment for potato biorefinery: Side stream potential in Northern Ostrobothnia	695
D. Baranenko, V. Kolodyaznaya and Y. Broyko Effect of cold treatment on the amino acid composition of veal	705
N. Iakovchenko and L. Silantjeva Vegetable ingredients in soft cheese made from concentrated skim milk by ultrafiltration	717
L. Kuznetsova, L. Zabodalova and D. Baranenko On the potential of lupin protein concentrate made by enzymatic hydrolysis of carbohydrates in dairy-like applications	727
T. Michlová, Š. Horníčková, H. Dragounová and A. Hejtmánková Quantitation of vitamins A and E in raw sheep milk during lactation period	737
U. Moor, P. Pöldma, T. Tõnutare, A. Moor and M. Starast The effect of modified atmosphere storage on the postharvest quality of the raspberry ‘Polka’	745
H. Mootse, A. Pisonen, S. Pajumägi, A. Polikarpus, V. Tatar, A. Sats and V. Poikalainen Investigation of Casein Micelle Particle Size Distribution in Raw Milk of Estonian Holstein Dairy Cows	753
L. Nadtochii and A. Koryagina Fermented sauces for child nutrition from age three	759
O. Orlova and U. Nasonova The unique characteristics of milky-wax ripe walnuts and their usage	769
A. Pastukhov and H. Dogan Studying of mixing speed and temperature impacts on rheological properties of wheat flour dough using Mixolab	779
A. Pisonen, S. Pajumägi, H. Mootse, A. Sats, V. Poikalainen and A. Karus Effect of cooling rates and low crystallization temperatures on morphology of lactose crystals obtained from Ricotta cheese whey	787
A. Põldvere, L. Lepasalu, A. Tänavots, J. Olt, U. Sannik, A. Sats, R. Saar, R. Martinson and V. Poikalainen An alternative method for meat shear energy estimation during ageing	793
A. Sats, H. Mootse, S. Pajumägi, A. Pisonen, V. Tatar and V. Poikalainen Estimation of Particle Size Distribution in Bovine Colostrum Whey by Dynamic Light Scattering (DLS) Method	801

An alternative method for meat shear energy estimation during ageing

A. Põldvere¹, L. Lepasalu¹, A. Tänavots¹, J. Olt¹, U. Sannik^{1,2}, A. Sats¹,
R. Saar¹, R. Martinson³ and V. Poikalainen^{1,*}

¹Estonian University of Life Sciences, Kreutzwaldi 1, EE51014 Tartu, Estonia;

*Correspondence: vaino.poikalainen@emu.ee

²Competence Center of Food and Fermentation Technologies, Akadeemia tee 15, EE12618 Tallinn, Estonia

³AS Rakvere Meat Processing Plant, Roodevälja, Sõmeru, EE44207 Lääne-Viru County, Estonia

Abstract. The aim of this research was to study an alternative method (gravitational impulse method) for meat shear energy estimation. A falling shear blade (guillotine) with constant potential energy was used. Shear energy was determined as the difference between the initial potential energy of the blade and the residual energy measured via the impulse provided by the shear blade during collision with the force plate on the bottom of the device. The shear energy measured by the gravitational impulse method was compared to the data received by the texture analyser TMS PRO based on the Warner-Bratzler method. The meat shear parameters of deboned beef striploin samples were measured after 2, 7, 14, 21, 28 and 35 days of ageing at 0–2°C. The results of both methods (gravitational impulse method and Warner-Bratzler method) indicated similar trends of shear energy lessening during beef ageing. Based on the preliminary results, it can be concluded that the gravitational impulse method is suitable for evaluation of meat texture during ageing as well. The main advantage of this method is its simplicity and the low price of the device.

Key words: Warner-Bratzler share force test, gravitational impulse method, beef shear energy.

Abbreviation key: MLD – *Musculus longissimus dorsi*, WB – Warner-Bratzler, GIM – gravitational impulse method.

INTRODUCTION

Beef texture is tough, thus it must be aged before consumption to improve the meat tenderness (Field et al., 1971; Jennings et al., 1978; Mottram, 1998). Textural parameters are very important during meat processing and regarding the sensory characteristics of meat products. Special texture analyzers are produced for quantitative evaluation of meat texture, which measure force dynamics at constant cutting speed. Such texture analyzers based on the Warner-Bratzler (WB) methodology and with determined characteristics are mainly used in scientific investigations (Wheeler et al., 1999; Hopkins et al., 2011). Application of these devices in meat industry is not common due to their operational complexity and considerably high price.

The aim of this work was development and evaluation of an alternative device based on the gravitational impulse method (GIM) for estimation of beef shear energy during ageing. Shear energy of aged steak samples was measured by the gravitational impulse method (GIM) and with the TMS PRO equipment based on the Warner-Bratzler method (Tommy et al., 2013) during the study.

MATERIALS AND METHODS

An experimental device using the gravitational impulse method (GIM) for estimation of meat shear energy was developed at the Department of Food Science and Technology of the Estonian University of Life Sciences. The GIM device contains a blade, a cutting table and a force plate with a transducer to record impulses (Fig 1). To carry out measurements, a meat sample is placed on the cutting table between the shear blade and force plate, where the sample is penetrated by the free fall of the blade. After shredding the sample, the blade falls onto the force plate and its transducer generates an impulse, which is recorded by a measurement controller. The weight of the blade is 1.10 kg and its initial height from the force plate is 460 mm. The shear energy can be determined as a difference between the initial potential energy of the blade and the residual energy generating an impulse on the force plate. The softer the structure of the meat, the stronger the strike to the force transducer and vice versa.



Figure 1. The test device to determine the shear energy of meat by using GIM method (1 – blade, 2 – force transducer, 3 – blade leading rods, 4 – slidebearing, 5 – cutting table).

Physics of the GIM device based on energy balance. If the blade is lifted to a certain altitude (h), it holds the potential energy (E_p).

While dropping the blade from that height, the potential energy (E_p) turns into kinetic energy (E_k), the end value of which corresponds to the size of the impulse (i) generated by the force plate transducer 1 (Fig. 2). This can be estimated by calculation of the surface area under the graph of force dynamics. The meat sample on cutting table will consume a part of that energy (shear energy E_L), and the force transducer will record a lower result accordingly.

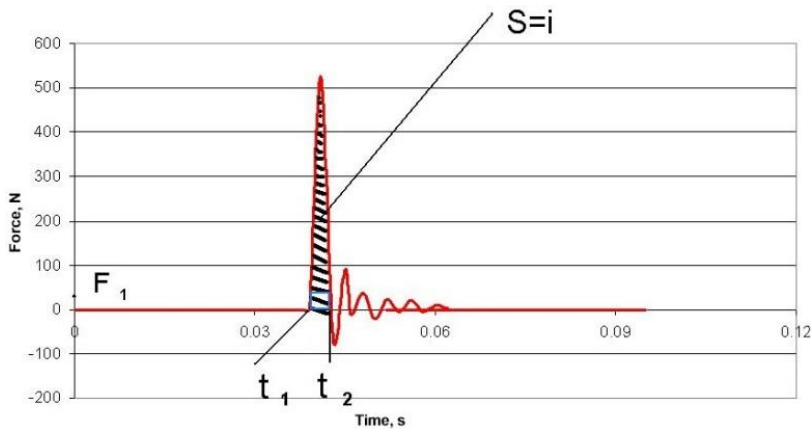


Figure 2. Example of the force dynamics recorded by the force plate transducer of the GIM device during a measurement cycle.

Experiments were carried out at the Department of Food Science and Technology (Estonian University of Life Sciences) in 2013. Three deboned *M. longissimus dorsi* muscles (MLD) removed from beef carcasses two days after slaughtering were used for the experiments. Each muscle was cut into six samples with the weight of about 300 g each and aged in vacuum packages at 0–2°C for 2, 7, 14, 21, 38 and 35 days. Hanzelková et al. (2011) have suggested that for improvement of beef tenderness it should be aged for at least 14 days. The total ageing time in our investigation was chosen to cover all spans reported in the literature on different meat ageing studies (Koochmaraie et al., 1995; Sañudos et al., 2004; Vieira et al., 2007; Muchenje et al., 2008). Preparation of probes for analyses was carried out according to the methodology of WB (Savell et al., 2013). Probes were obtained from the meat samples by using a hollow drill with the inner diameter of 20 mm. Up to ten probes were drilled off each of the MLD segments along the muscle fibres (Fig. 3). The shear force dynamics of both raw and thermally treated samples of aged beef were registered by the WB and GIM methods. Later, total shear energy was calculated from force dynamics. Probes were sheared from the middle perpendicularly to the muscle fibres in six separate trials. For thermal treatment, meat samples were heated in a water bath until the inner temperature reached 72–76°C.



Figure 3. Samples of meat taken by hollow drill.

The texture analyzer TMS PRO with a 1000 N force transducer and blade movement speed of 500 mm min⁻¹ was used for the WB method. Total shear energy consumption during cutting the probe was estimated by calculating the surface area under the force dynamic curve (Fig. 4). The blades in both (WB and GIM) devices had similar configurations with a 60° V-shaped incision and thickness of 1.016 mm).

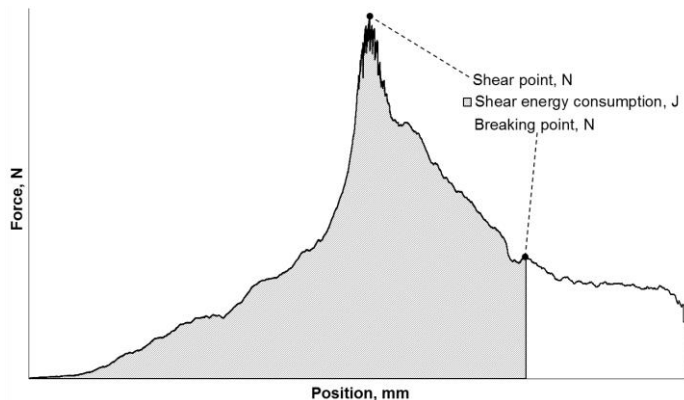


Figure 4. Force dynamics during the Warner-Bratzler test and determination of shear energy by calculating the surface area under the curve (Luno et al., 1999).

To assess the effect of ageing on the shear energy of samples, a one-way analysis of variance was performed with the spreadsheet program Excel 2010. For determination of statistical difference between the devices, student's t-test was used. The mean differences in shear energy between ageing days were evaluated by the statistical package R (R Core Team, 2013).

RESULTS AND DISCUSSION

The data of the WB method showed lower shear energy consumption when cutting raw meat samples compared to thermally treated ones ($P < 0.001$). The latter consumed 0.62 J more energy in comparison with raw meat ($P = 0.001$) (Fig. 5). The parameters of raw and thermally treated meat samples did not differ significantly ($P = 0.880$) when using the GIM method. It can be concluded that the GIM method is not suitable for determining the differences between boiled and raw meat.

Estimation of shear energy is especially important in the course of aging, because a decrease in it characterizes the enzymatic processes in the muscle, which have an effect on the muscle fibres where myofibrillar proteins degrade and meat becomes softer (Koochmaraie et al., 1995). The shear energy consumption measured by the WB method in our experiments decreased significantly ($P < 0.001$) during ageing (Fig. 6a). The shear energy of thermally treated meat (compared to raw meat) was 0.8 J higher at the beginning of ageing (day 2), however, at the end of ageing (day 35), the difference had decreased to 0.35 J.

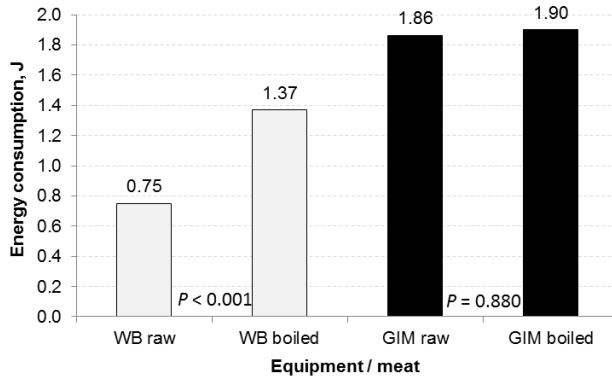


Figure 5. The shear energy consumption of raw and thermally treated meat in comparison with the WB and the GIM methods.

The shear energy consumed by the GIM method for cutting raw meat samples decreased even more during ageing (Fig. 6b), with a little bit lower statistical reliability ($P = 0.028$).

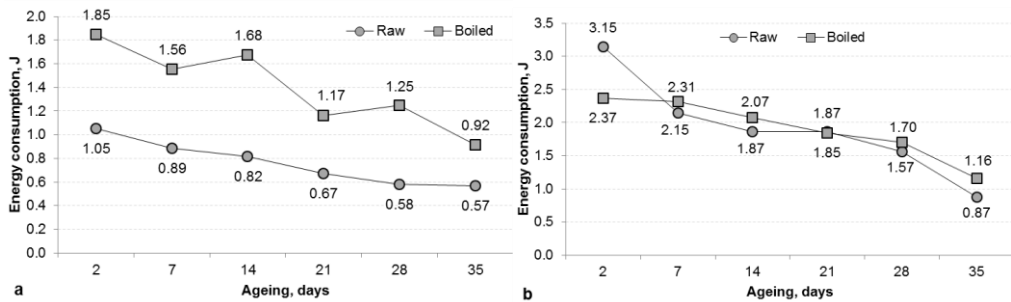


Figure 6. Changes in shear energy consumption by raw and thermally treated meat during ageing estimated with WB (a) and GIM (b) devices.

Different studies about the effect of beef ageing have produced somewhat different results. Roncalés et al. (1995) found that increasing MLD muscle ageing time changed the texture of the meat – meat tenderised throughout the whole ageing period. Huff & Parrish (1993) and Sañudos et al. (2004) concluded that 21-day ageing of MLD muscles decreased the shear force evenly in time. Our experimental data confirmed this statement. Vieira et al. (2007) and Muchenje et al. (2008) obtained different results – the conclusion of the first study was that the WB shear force value of MLD muscle decreased ($P < 0.1$) between 14 and 28 ageing days, and the second study showed that MLD muscle already reached the final tenderness by the second day of ageing and the WB shear force did not reduce significantly later (up to the 21st ageing day).

Accioli et al. (1995) found that the WB shear force values differed significantly between the 9th and 16th days of ageing, however, there were no significant differences between the 16th and 23rd day.

In our investigation, the average shear energy of raw and thermally treated meat samples decreased during ageing by using both (WB and GIM) meat shearing methods (Tables 1, 2, Figs 7, 8).

Table 1. The effect of ageing on raw meat shear energy consumption by using the WB and GIM methods (a, b, c, and d – the means within each effect with one letter in common do not differ significantly, $P > 0.05$)

Energy consumption, J	Ageing, days					
	2	7	14	21	28	35
WB method	1.05 ^a	0.89 ^{ab}	0.82 ^{abc}	0.68 ^{bc}	0.58 ^c	0.57 ^c
GIM method	3.15 ^a	2.15 ^{ab}	1.87 ^{ab}	1.87 ^{ab}	1.56 ^{ab}	0.87 ^b

Table 2. The effect of ageing on boiled meat shear energy consumption by using the WB and GIM methods (a, b, c, and d – the means within each effect with one letter in common do not differ significantly, $P > 0.05$)

Energy consumption, J	Ageing, days					
	2	7	14	21	28	35
WB method	1.85 ^a	1.56 ^{ab}	1.68 ^{ab}	1.17 ^{bc}	1.25 ^{bc}	0.92 ^c
GIM method	2.37 ^a	2.31 ^a	2.07 ^a	1.85 ^a	1.71 ^a	1.16 ^a

The effect of ageing on the shear energy of raw meat is illustrated on Fig. 8. The statistical significance of this effect was < 0.001 in the case of the WB method and 0.02 in the case of the GIM method. The shear energy values obtained by the GIM method were larger compared to the WB method throughout the total ageing period. Shearing energy decreased noticeably faster at the beginning of the ageing period in comparison with the end of the period. On the second day of ageing, the shear energy consumption by the GIM was 2.1 J (3.15–1.05 J) higher than that of the WB. At the end of the ageing period (35 days), this difference had decreased to 0.3 J. These data indicate the much greater sensitivity of the GIM method in the first week of ageing, compared to the WB method. Therefore, development of a new express device for evaluation of the initial stage of meat ageing would be reasonable.

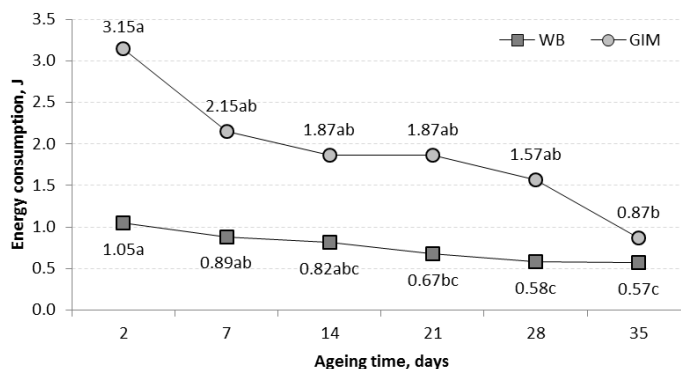


Figure 7. Changes in raw meat shear energy consumption measured by WB and GIM devices during the beef ageing period.

Thermally treated and raw meat showed similar trends in the changes of shear energy consumption for both (WB and GIS) methods (Table 2, Fig. 8) with differences in statistical significance. Shearing of thermally treated meat with the WB method showed a significant decrease in shear energy consumption during ageing days ($P < 0.001$), but the GIM method did not show a significant difference ($P = 0.38$).

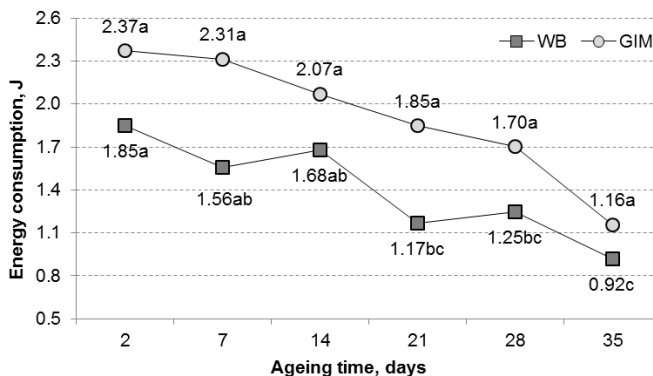


Figure 8. Changes in thermally treated meat shear energy consumption measured by WB and GIM devices during the ageing period.

CONCLUSIONS

1. The effect of ageing on the structure of meat can be determined both by the classical (WB) and the gravitational impulse method (GIM).
2. The GIM method is more sensitive in determining the tenderness of aged raw meat compared to the WB method. The advantage of the gravitational method is its simplicity.
3. On the base of the GIM method, development of a new texture analyzer for meat industry would be reasonable.

REFERENCES

- Accioli, A., Franci, O., Sargentini, C., Pugliese, C., Bozzi, R. & Lucifero, M. 1995. Effetto della frollatura sulle caratteristiche della carni di vitelloni Chianini da 16 a 24 mesi di eta. Atti XI Congresso Nazionale ASPA-Grado, 359–360.
- Field, R.A., Riley, M.C. & Chang, Y.O. 1971. Free amino acid changes in different aged bovine muscles and their relationship to shear values. *Journal of Food Science* **36**, 611–612.
- Hanzelková, Š., Simeonovová, J., Hampel, D., Dufek, A. & Šubrt, J. 2011. The effect of breed, sex and ageing time on tenderness of beef meat. *Acta Vet. Brno*, **80**, 191–196.
- Hopkins, D.L., Toohey, E.S., Kerr, M.J. & van de Ven, R. 2011. Comparison of two instruments (G2 Tenderometer and a Lloyd Texture analyser) for measuring the shear force of cooked meat. *Animal Prod. Sci.* **51**, 71–76.
- Huff, E.J. & Parrish, F.C.Jr. 1993. Bovine longissimus muscle tenderness as affected by post-mortem ageing time, animal age and sex. *J. Food Sci.* **58**, 713–716.
- Jennings, T.G., Berry, B.W. & Joseph, A.L. 1978. Influence of fat thickness, marbling and length of ageing on beef palatability and shelf-life characteristics. *J. Animal Sci.* **46**, 658–665.

- Koohmaraie, M., Wheeler, T.L. & Shackelford, S.D. 1995. Beef tenderness: regulation and prediction. *USDA-ARS U. S. Meat Animal Research Center* **9**, 1–25.
- Luno, M., Beltran, J.A., Jaime, I. & Roncales, P. 1999. Textural assessment of clenbuterol treatment in beef. *Meat Sci.* **51**, 297–303.
- Mottram, D.S. 1998. Flavour formation in meat and meat products: A review. *Food Chem.* **62**, 415–424.
- Muchenje, V., Dzama, K., Chimonyo, M., Raats, J.G. & Strydom, P.E. 2008. Meat quality of Nguni, Bonsmara and Aberdeen Angus steers raised on natural pasture in the Eastern Cape, South Africa. *Meat Sci.* **79**, 20–28.
- R Core Team. 2013. R: A language and environment for statistical computing. R Foundation for Statistical Computing, Vienna, Austria. URL <http://www.R-project.org/>.
- Roncalés, P., Geesink, G.H., Van Laack, R.L.J.M., Jaime, I., Beltrán, J.A., Barnier, V.M.H. & Smulders, F.J.M. 1995. Meat tenderisation: Enzymatic mechanisms. Source: Ouali, A, Demeyer, D.I., Smulders, J.M. (eds), *Expression of tissue proteinases and regulation of protein degradations related to meat quality*. ECCEAMST, Utrecht, 311–332.
- Sañudo, C., Macie, E.S., Olleta, J.L., Villarroel, M., Panea, B. & Albertí, P. 2004. The effects of slaughter weight, breed type and ageing time on beef meat quality using two different texture devices. *Meat Sci.* **66**, 925–932.
- Savell, J., Miller, R., Wheeler, T., Koohmaraie, M., Shackelford, S., Morgan, B., Calkins, C., Miller, M., Dikeman, M., McKeith, F., Dolezal, G., Henning, B., Busboom, J., West, R., Parrish, F. & Williams, S. 2013. Standardized Warner-Bratzler Shear Force Procedure for Genetic Evaluation. <http://meat.tamu.edu/research/shear-force-standards/> Last visited 03.07.2013.
- Wheeler, T.L., Shackelford, S.D., Johnson, L.P., Miller, M.F. & Koohmaraie, M. 1997. A Comparison of Warner-Bratzler Shear Force Assessment Within and Among Institutions. *J. Animal Sci.* **75**, 2423–2432.
- Wheeler, T.L., Shackelford, S.D. & Koohmaraie, M. 2013. Warner-Bratzler Shear Force Protocol. USDA- ARS U.S. Meat Animal Research Center. <http://www.ars.usda.gov/SP2UserFiles/Place/54380530/protocols/Warner-BratzlerShearForceProtocol.pdf/>
- Vieira, C., Cerdeño, A., Serrano, E., Lavín, P. & Mantecón, A. R. 2007. Breed and ageing extent on carcass and meat quality of beef from adult steers (oxen). *Livestock Sci.* **107**, 62–69.